

Relação do aço						
P10		P11		P12		
P13		P17		P18		
AÇO	N	D/AM (mm)	QUANT	C.UNIT (cm)	C.TOTAL (cm)	
CA60	1	5,0	102	68	6936	
	2	5,0	24	56	1344	
CA50	3	10,0	24	220	5280	
	4	10,0	24	VAR	VAR	

AÇO	DIAM (mm)	C.TOTAL (m)	PESO + 10 % (kg)
CA50	10,0	69,9	47,4
CA60	5,0	82,8	14
PESO TOTAL (kg)			
CA50	47,4		
CA60	14		

Volume de concreto (C-30) = 0.57 m³
Área de forma = 11.41 m²

Área de forma = 11.41 m²

Relação do aço

LAJETÉRREO:	P19	P20
	P24	
LAJETÉRREO 1:	P1	P2
	P3	

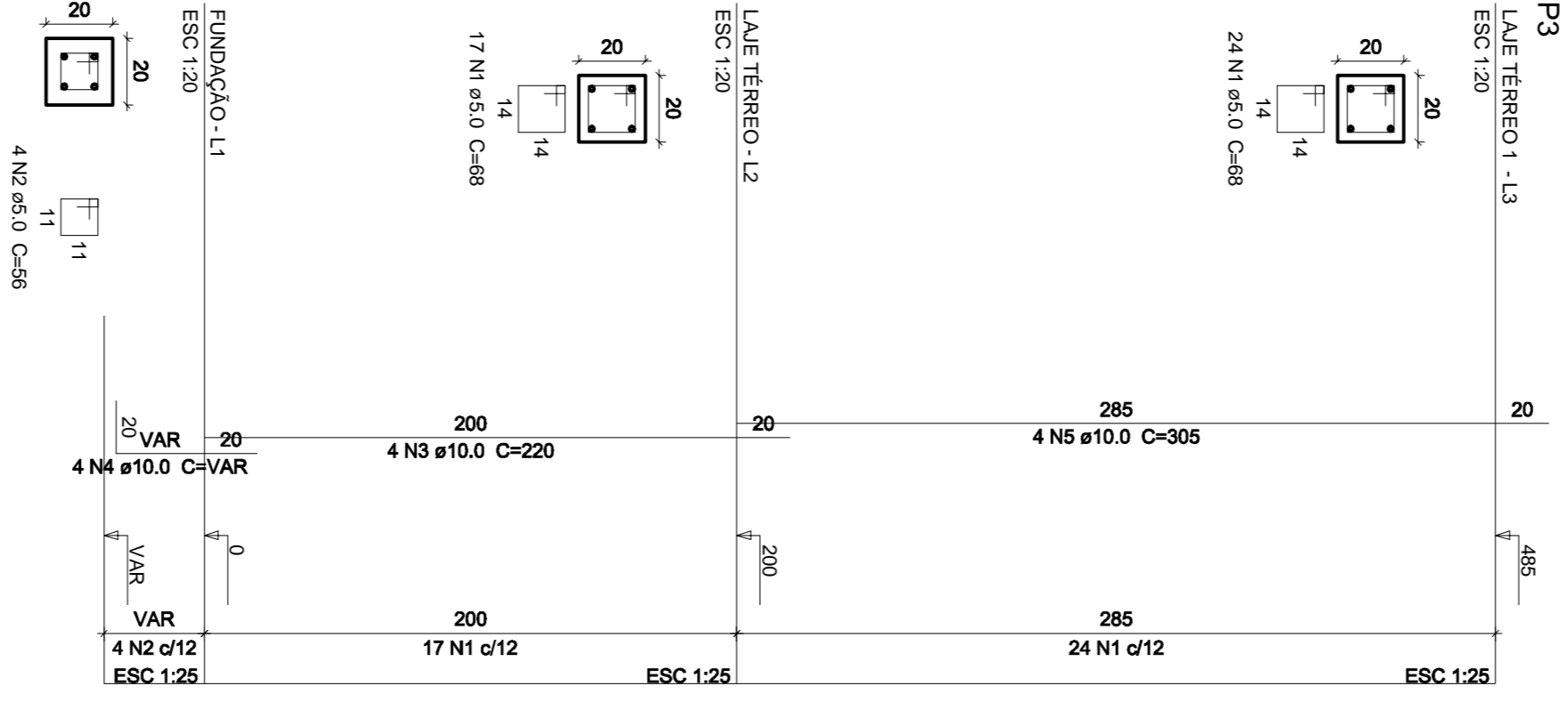
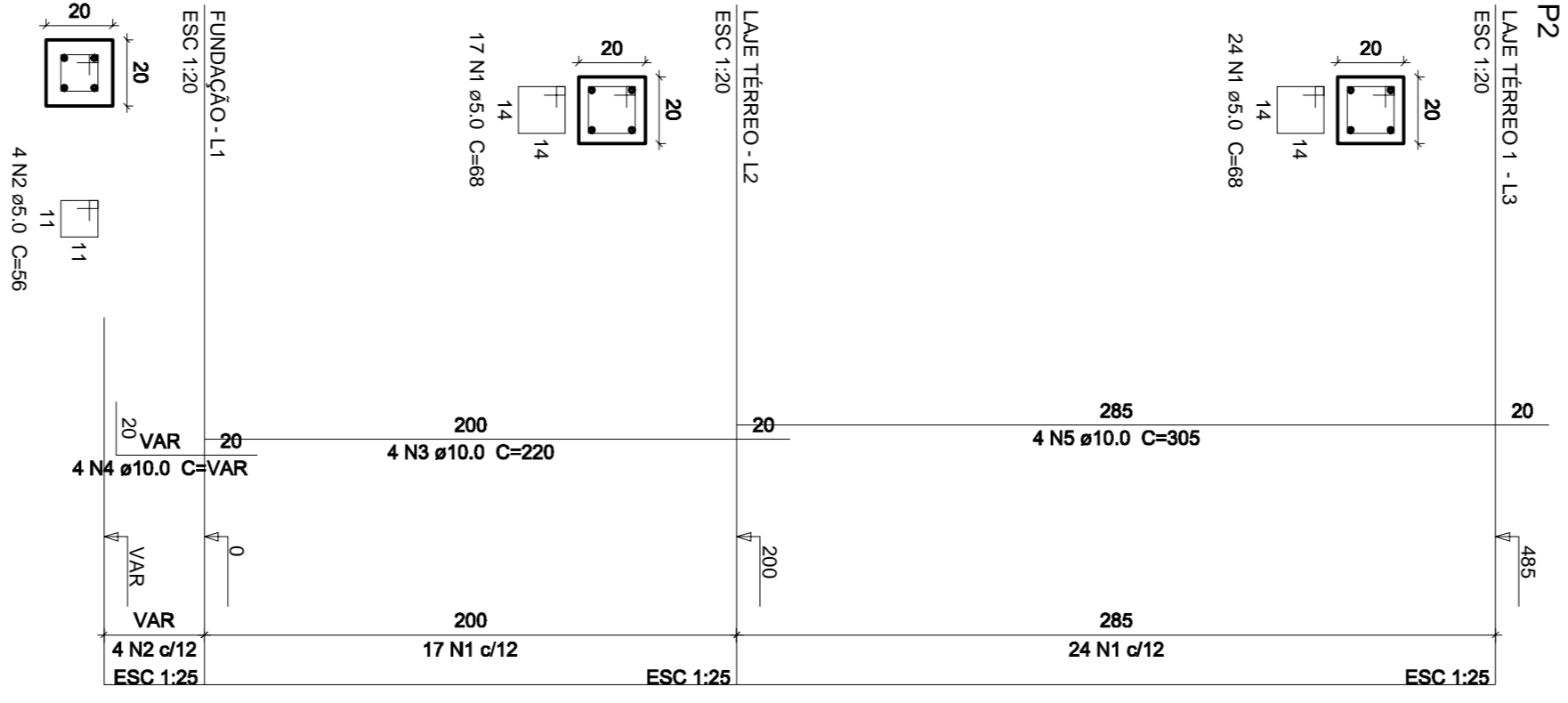
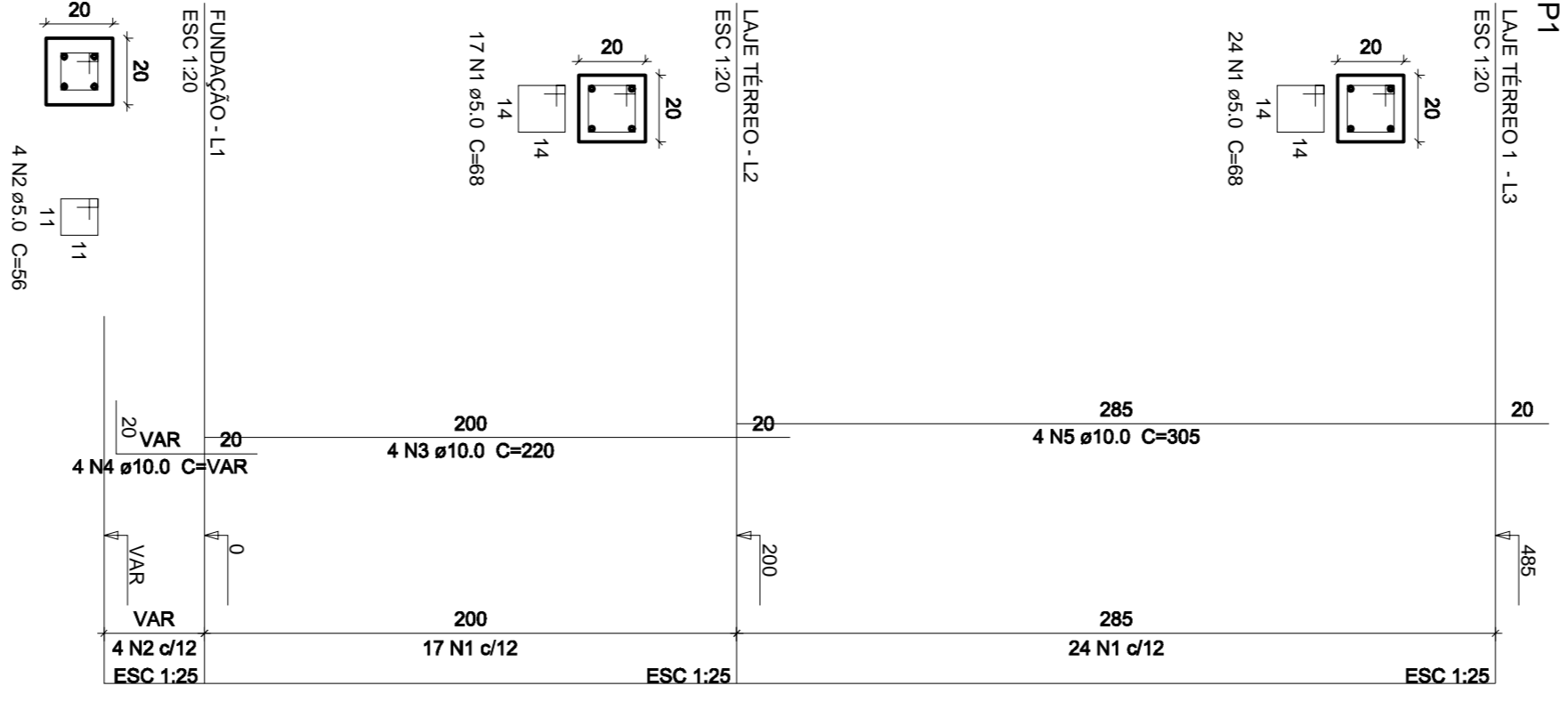
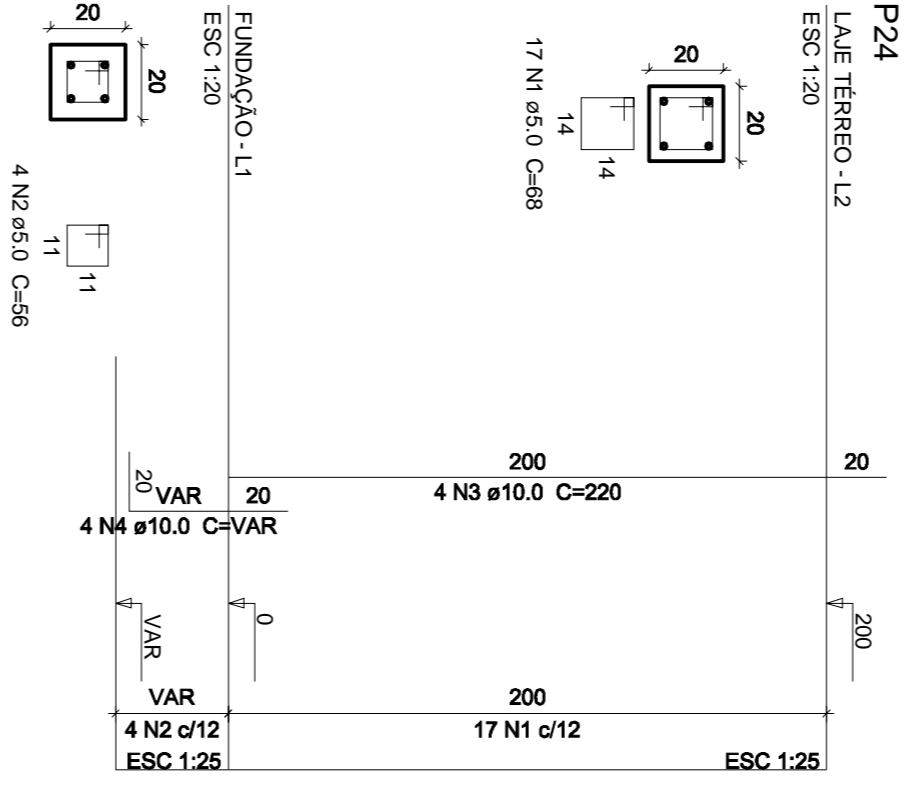
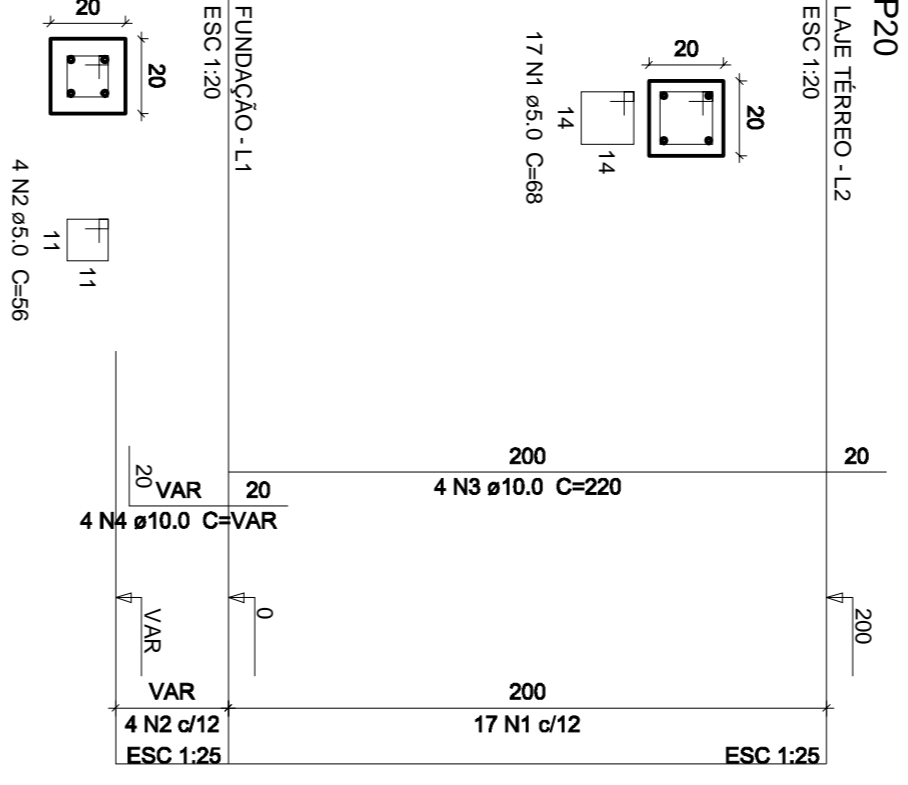
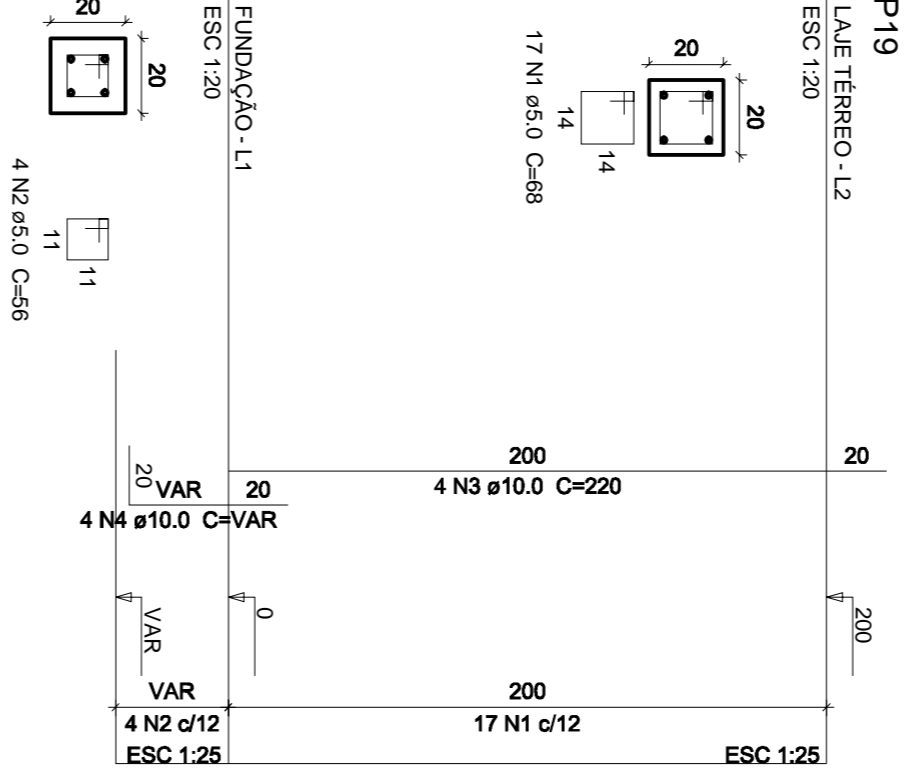
ACO	N	DIAM (mm)	QUANT	C.UNIT (cm)	C.TOTAL (cm)
CA50	1	5,0	174	68	11832
	2	5,0	24	56	1344
	3	10,0	24	220	5280
	4	10,0	24	VAR	VAR
	5	10,0	12	305	3660

Resumo do aço

	DIAM (mm)	C TOTAL (m)	PESO + 10 % (kg)
AÇO			
CA50	10,0	106,5	72,2
CA60	5,0	131,8	22,3
PESO TOTAL (kg)			
CA50			72,2
CA60			22,3

Volume de concreto (C-30) = 0.91 m³

Área de forma = 18.25 m

[illegible]